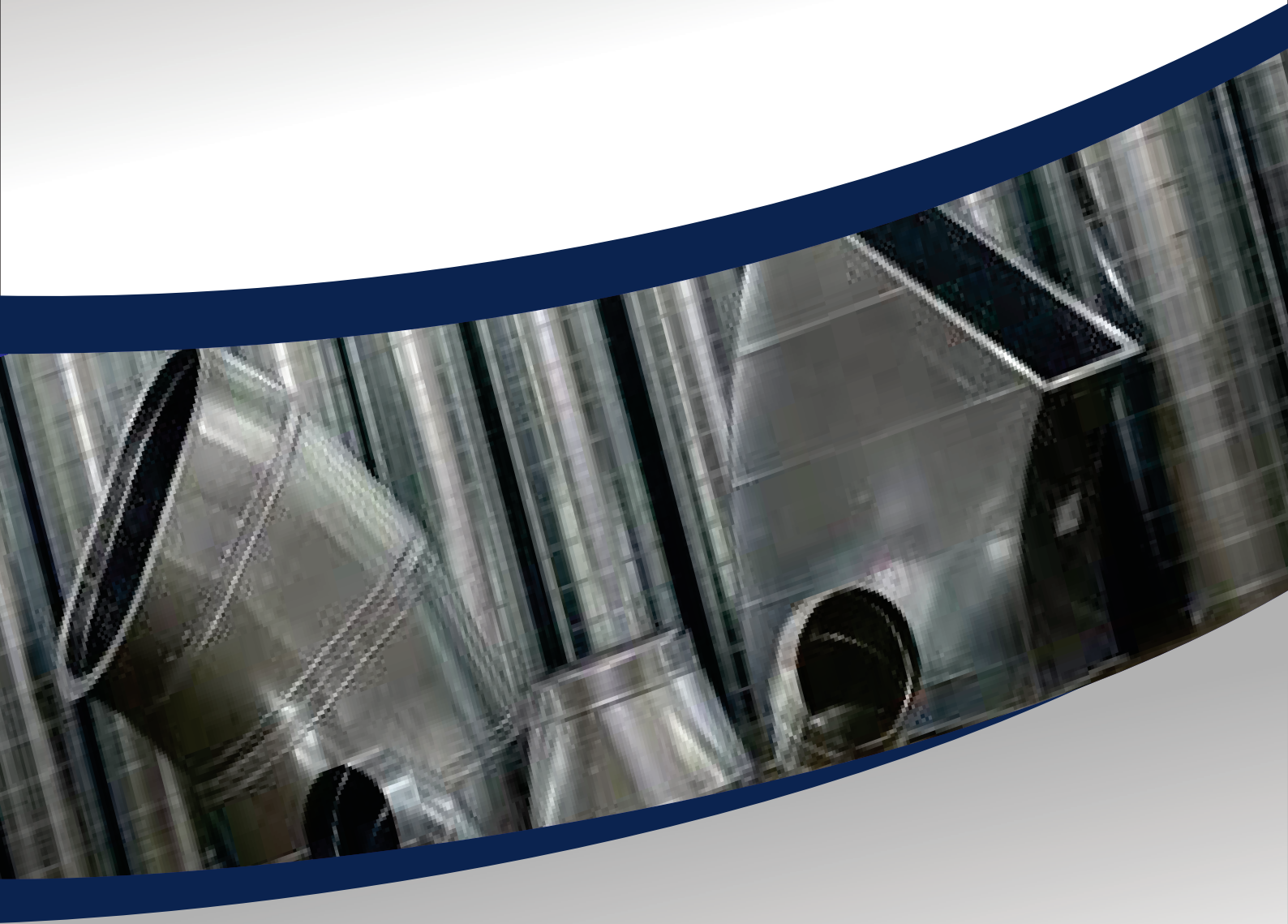




KANVA COOL
Best Quality & Time meets



KANVA COOL DUCTS PVT LTD

Product Catalogue

KANVA COOL PRODUCTS

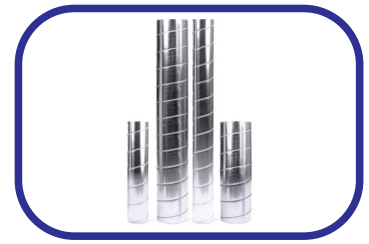
Sound Attenuators



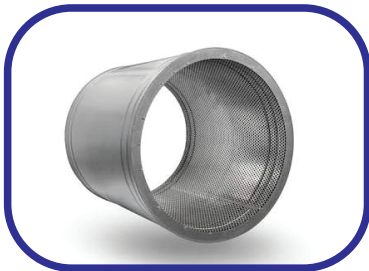
Double skin Plenum



Spiral Round Duct



Circular sound Attenuators



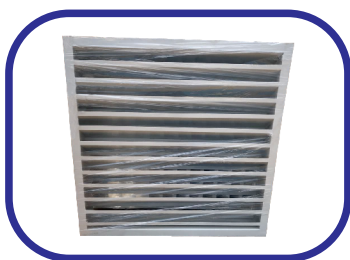
Butterfly Dampers



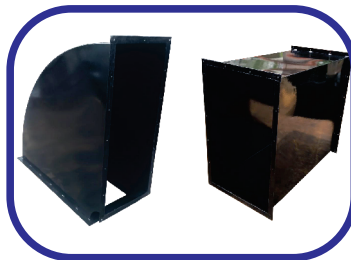
Round Duct



Louvers



Kitchen Exhaust welded Duct



Volume Control Dampers



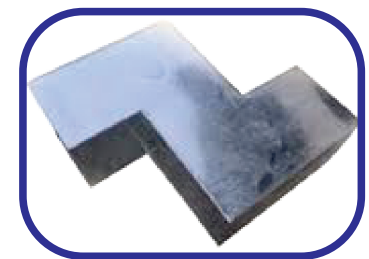
Wall acoustic panel



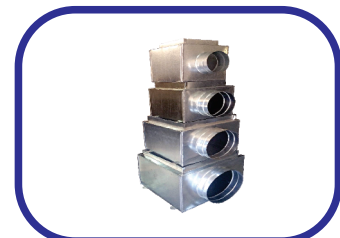
Non Return Damper



Crosstalk Attenuator



Mixing Boxes



Air Handling Unit



Polypropylene with FRP Duct



KANVA COOL PROFILE

Kanva Cool is a recognized manufacturer of all types of Air Control Equipments and Air Distribution products (HVAC) systems. Our product line includes AHU - Air Handling Unit, Plenum - Single / Double Skin, Sound Attenuator, Crosstalk Silencer, Volume Control Damper, Fire Damper, Kitchen exhaust Duct, Mixing Box and Air Intake Louver. Our offered products are widely appraised among our prestigious clients due to their robust construction, high performance, excellent functioning, easy installation and longer service life. Furthermore, we offer these products in various options to our clients at affordable prices.

With a zeal for innovation and a dedication to quality, Kanva Cool Industries has successfully garnered huge client base all across the region. We have a team of highly skilled professionals from the fields of construction, architecture, health care, biotechnology and pharmaceutical industries and others. Our company has an advanced infrastructure, which is segregated into various units such as production, quality testing, research & development, warehousing and packaging. All these units are operated by our highly skilled professionals holding rich industrial experience and expertise.

Commitment to Quality

We do not compromise upon Quality in everything we provide. To ensure delivery of flawless products, we have hired quality controllers, who conduct several quality checks. Our professionals work in close coordination with each other and clients in order to understand their specific requirements and cater to them efficiently. Owing to our quality-centric approach, we have been able to win huge accolades in the market.

Customer Satisfaction

We are committed to providing complete customer satisfaction through our quality products and timely delivery. We carry out each task precisely right from designing, fabrication and installation of HVAC systems and devices. The products are manufactured in conformity with the set quality norms. Moreover, our transparent business strategies and adherence to work ethics have enabled us to become a market leader. Contact us via phone or email to place your order. We will deliver the order at your doorstep and will make sure that the consignments reach you without any damage.



KANVA COOL
Best Quality & Time meets

“Best Quality & Time meets “

SPIRAL FLAT OVAL DUCT SPIRAL ROUND DUCT

SPIRAL FLAT OVAL DUCT



All Single wall Flat Oval Spiral Duct & fittings shall be manufactured conforming ASTM & SMACNA standards.

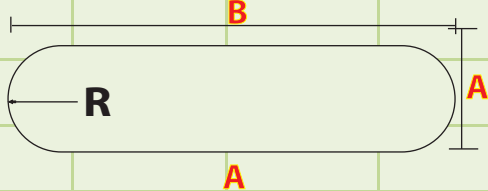
Materials

Galvanized Iron, Mild Steel, Stainless Steel. Standard connections are slip fit with couplings.

Double wall

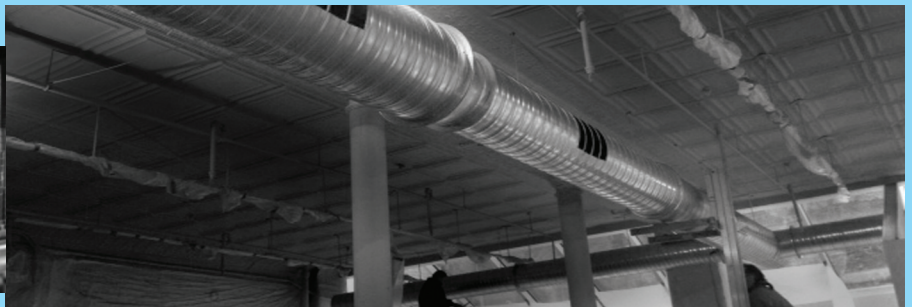
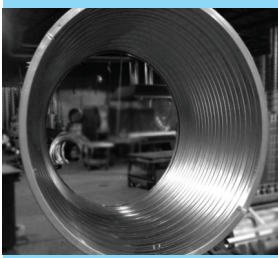
Outer wall Galvanized, Inner wall Galvanized with accuflange rings double wall insulated spiral available with fiberglass / open cell nitrile rubber insulation as per requirement. Flat Oval Ducts are fabricated using a lock seam method with a double bead in between each lock seam to reinforce its strength and durability.

FLAT OVAL MINOR AXIS

TUBE DIA	150	200	250	300	350	400	450	500
400	550	525					B	
450	625	600	575					
500	700	675	650	625			A	
550	800	750	725	700	675	650		
600		850	800	775	750	725	700	675
650		925	900	850	825	800	775	750
700		1000	975	950	900	875	850	825
750			1050	1025	1000	950	925	900
800			1125	1100	1075	1050	1000	975
850			1200	1175	1150	1125	1100	1050
900			1275	1250	1225	1200	1175	1150
950				1325	1300	1275	1250	1225
1000				1400	1375	1350	1325	1300
1050				1500	1450	1425	1400	1375
1100				1575	1550	1500	1475	1450
1150					1625	1600	1550	1525
1200					1700	1675	1650	1600
1250					1775	1750	1725	1700

SPIRAL ROUND DUCT

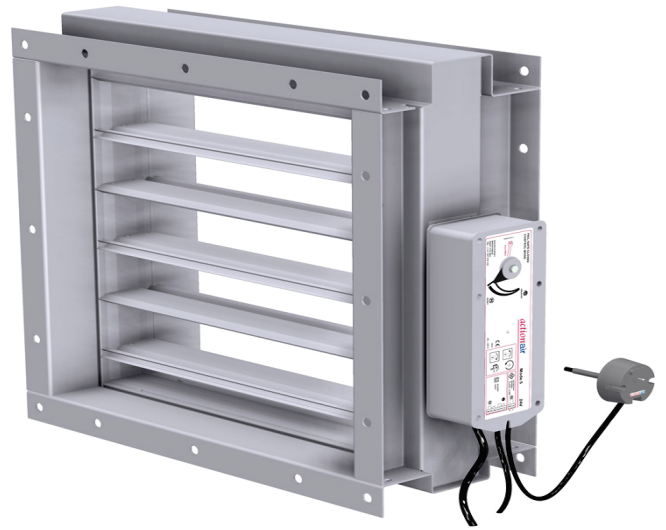
Spiral Round Ducts are designed & manufactured to comply with SMACNA & ASHRAE standards. The spiral round duct is produced by duct forming machine with strong spiral seams providing reinforcement that are made to meet ASTM A635.



TYPES OF FIRE DAMPER

Fusible link Fire Damper

Motorized Fire Damper



Fire Dampers are installed in ducts and air transfer openings in air distribution systems designed to close upon the detection of heat. In the event of a fire, fire dampers shut automatically to prevent the propagation of fire & smoke through duct work to adjacent designated fire compartments.

Fusible link Fire Damper

In this, the damper is triggered by a fusible link at 72^oc. The fusible link is the mechanism that holds the damper blades in the open position. If the fuse link reaches the temperature set point the fuse link will open. When the fuse link opens, the damper blades close & prevent the spread of fire for a set amount of time. The standard fusible link for metal-Fab fire damper is 165^oF. Two other fusible links with different temperature set points are available - 212^o F & 286^o F

Motorized Fire Damper

In this case the fire damper is closed by thermo electrically with a spring return actuator. It is a failsafe design which enables the dampers to automatically resume the desired position when fire or smoke detected by control panel through fire CR module. The duct temperature sensor permits controlled closure through the actuator. Control Panel is provisioned open/close light indicators & a test button. The frame of the damper is suitable for duct connection. Fire dampers are designed for the lowest possible pressure drop.

DOUBLE SKIN PLENUM



Specialized in manufacturing wide range of double skin filled with high grade material like expanding polysocyanate foam/rigid polyurethane foam as per specifications with advance manufacturing technology.

Sailent Features

- ◆ Strong, Rigid, Reliable & Durable
- ◆ Wide range of application with temperature ranges from - 5^o to +100^o c
- ◆ Higher Insulating properties leak proof
- ◆ Easy to dissemble & reassemble
- ◆ Quiet
- ◆ Access Door as per site requirement.

Functions

- ◆ High level of efficiency
- ◆ Durable and reliable
- ◆ Smooth functioning
- ◆ Used for heavy duty applications

HOLLOW PROFILE DUCT



Kanva provides a wide range of ducts made of Galvanized Iron, Aluminum, Stainless & mild steel to ensure customer satisfaction. Kanva employs up-to-date modern technology, special skilled workspace & professionals, latest automatic manufacturing machines. While manufacturing ducts, every piece comprehensively checked at each stage of fabrication, adhering strictly to specifications & quality standards.

Features

- ◆ Ducts are fabricated from high quality (G-90, Z-275) grade G.I. coils of reputed make Jindal, Nippon, POSCO, AGIS, etc.
- ◆ To strengthen, beading is done to all of our straight ducts at a distance of 300 mm.
- ◆ Pittsburgh longitudinal joints are associated with large pocket size, hence generating extra strong and leak proof joint.
- ◆ Special CGF integral flanges with auto double stitching ensures a product suitable for all applications.

MATERIAL SPECIFICATIONS

- ◆ All ductwork including duct connectors and accessories are made of galvanized steel.
- ◆ Rectangular ducts and fittings are produced as per SMACNA duct construction standards.



Type of Ducts

- ◆ Box Type Duct
- ◆ L Type Duct
- ◆ 4 Piece Duct

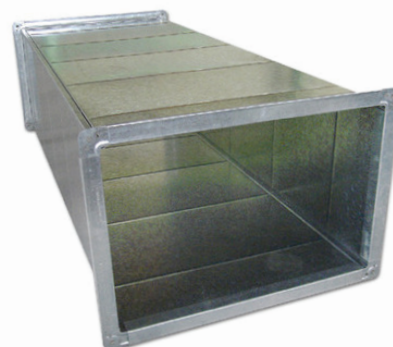


Type of Connections

- ◆ Transverse Duct Connections
- ◆ Transverse Duct Flanges
- ◆ Slip and Drive Duct
- ◆ Iron Angle / GI Flange

Options

- ◆ Ducts and fittings can be supplied in Black Steel, Stainless Steel or Aluminium.
- ◆ They are available in various metal gauges, as per customer's request.
- ◆ Available as well are beaded or stacked ducts.
- ◆ Cross breaking is available upon request.
- ◆ Bare or lined ducts are also available.
- ◆ Available options for Joint connectors are: slip & drive, TDC or duct mate Flange.
- ◆ For duct seam construction; Pittsburgh or snaplock are available.
- ◆ For fittings seam construction: Pittsburgh or welded are available.
- ◆ Pittsburgh lock, available in 26 gauge through 16 gauge, as per customer's request.
- ◆ 4 Bolt flange connectors are available for higher static pressure systems.
- ◆ Ducts and fittings can be internally or externally insulated.
- ◆ Flame retardant option is available.



SOUND ATTENUATORS

Sound Attenuators are used to minimize noise in air distribution system. Rectangular attenuators provides optimized acoustic performance for application where high levels of noise reduction are required. These attenuators are suitable for most applications incorporating sound attenuation and airflow.

TYPES OF ATTENUATORS

RECTANGULAR SOUND ATTENUATOR

CIRCULAR SOUND ATTENUATOR

CROSS TALK ATTENUATOR

RECTANGULAR SOUND ATTENUATORS

Construction



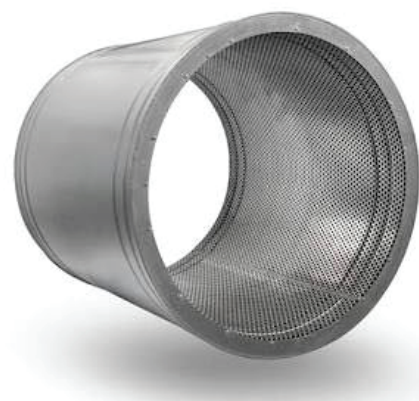
- ◆ Outer casing made of 20g galvanized steel sheet.
- ◆ Attenuating splitters made of 22g GSS frame and filled in with layers of Protective Tissue over highly absorptive fiberglass insulation enclosed in 26 Gauge Aluminium perforated Sheet.
- ◆ Casing with special design TDF, Square slot corners(same as Duct flange), for better alignment with duct & low air leakage.
- ◆ Splitters have conical end at both the ends to minimise air pressure

Features

- ◆ Casing with special designed TDF, Square slot corners (same as Duct flange), for better alignment with duct and low air leakage.
- ◆ Splitters with conical Ends for minimum pressure drop.
- ◆ Available with various configuration of air way gap.
- ◆ Optimized pressure drop and noise reduction with proper selection of air gaps.
- ◆ Available in any cross sectional size.

CIRCULAR ATTENUATORS

- ◆ Outer Casing made of 20g Galvanised Steel Sheet.
- ◆ Inner casing with 24g perforated Galvanised steel sheet.
- ◆ Casing is made with pitsburg joint and connection spigots.
- ◆ Attenuation lining made with Layers of Protective Tissue
- ◆ Over highly absorptive fiber glass insulation



Features

- ◆ Minimum Pressure drop at optimised noise level.
- ◆ Suitable for low velocity duct system to high velocity duct system.
- ◆ Silencer ends with circular flanges for easy connectivity with the system.
- ◆ Fabricated in modules to make the overall silencer bank.
- ◆ Available with any cross section.
- ◆ Available in various attenuating material thickness (50mm, 75mm & 100mm).

Dampers are widely used to control the flow of air in an heating or cooling ducts in order to improve efficiency and occupant comfort through efficient air balancing.

SQUARE/RECTANGULAR DAMPER

ROUND BUTTERFLY DAMPER

SQUARE DAMPER

Casing and flaps are manufactured by using galvanized steel sheet. Flaps are mounted in nylon bushes operated by an external linkage which allow the damper position to open or close with a minimum air disturbance.

Aluminum flap VCDs are made with GSS outer frame and aerodynamic design extruded aluminum double skin flap.



For square / rectangular VCDs, standard damper construction comes with opposed blade arrangement with external linkage. Dampers can operate manually as well as powered by electronic actuators.

BUTTERFLY DAMPER



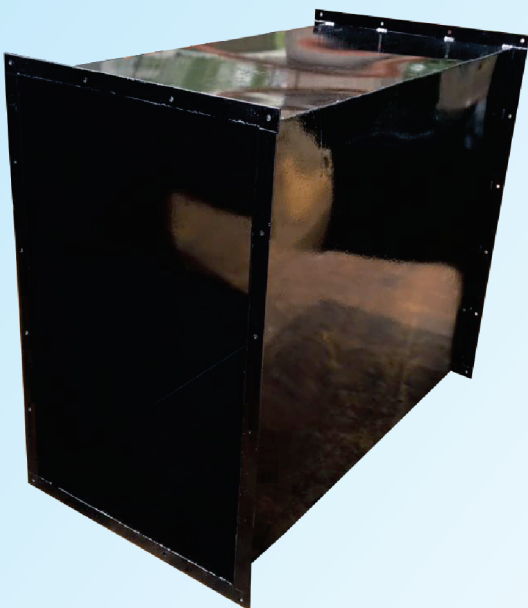
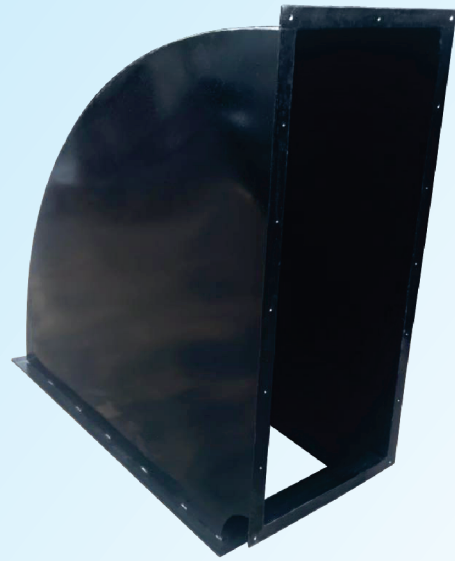
The Spigots with butterfly damper constructed with different thickness galvanized steel sheet with single/double flap, necessary stopper, flanges for fastening on to the duct surface & with grooves for clamping the flexible ducts.

Built with closed blade & ball bearing support with manual locking quadrant, round damper with ball bearing shaft support & manual control lever .

Operating shaft, handle locking with a standard slot type locking which provides perfect locking and good aesthetics when compared to welded locking and ensures handle position indicated accurate level of opening.

KITCHEN EXHAUST DUCT

Kitchen exhaust ducts are made of mild steel, Stainless steel or Galvanized Iron of specified gauges. MS Ducts are inherently fire resistant characteristic. This can be further enhanced by additional paints /coats.



Painting /Coating Option

- ◆ Red oxide Paint
- ◆ Enamel Paint
- ◆ Epoxy paint
- ◆ Fire rated Paint
- ◆ Fire retardant paint

Type of system available

- ◆ Bolt & Joints
- ◆ Welded Joints

Code Compliance

- ◆ NBC
- ◆ NFPA
- ◆ IMC



Gaskets provided are fire rated, non porous, impervious to grease, cooking oils and capable of withstanding high temperatures experienced in the kitchen extract system.







KANVA COOL

Best Quality & Time meets

KANVA COOL INDUSTRIES

No.V 17/1, 2nd 'C' Main Road, IInd Stage, Peenya Industrial Area,
BENGALURU - 560 058.

Phone: 080-40920191, Mob: +91 9845508237 / 9686968646

E-mail : Kanvacoolindustries@gmail.com / info@kanvacool.com

Website : www.kanvacool.com

KANVA COOL DUCTS PVT LTD

No. V 17/1, 2nd 'C' Main Road, IInd Stage, Peenya Industrial Area,
BENGALURU - 560 058,

Phone : 080-40920191, Mob: + 91 9845508237 / 9686968646

Email : Kanvacoolducts@gmail.com,

Website : www.kanvacool.com

